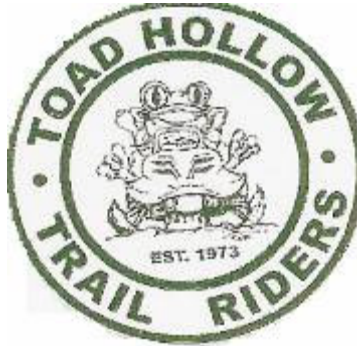


TOADHOLLOW TRAILRIDERS

P.O. BOX 6045
SYRACUSE, N.Y. 13217
315-446-4881



PUBLISHER: SUE TAYLOR

1-29-2007

2006 – 2007 OFFICERS AND BOARD MEMBERS

PRESIDENT	TIM TAYLOR	492-3515
VICE-PRESIDENT	DAN BILOW	492-9183
SECRETARY	SUE TAYLOR	492-3515
TREASURER	DICK FLOOD	492-0794
BOARD MEMBER	ARTIE EIPP	492-4718
BOARD MEMBER	BOB TILDEN	469-8734
BOARDMEMBER	TOM ANDREWS	468-6064
BOARDMEMBER	STEVE CHIORE	488-1099
TRAILMASTERS	STEVE FRANK	696-0056
	STEVE CHIORE	488-1099
PR MAN	BRIAN GALE	673-4585
WEB MASTER	JEFF FLAHERTY	487-5273
MEMBERSHIP CO-OR	LORI DANA	636-8116

WELL, WE FINALLY GOT ENOUGH SNOW. I KNOW EVERYONE HAS BEEN CHOMPING AT THE BIT TO RIDE. SO MAKE SURE YOU RIDE SAFE AND HAVE FUN !!!



TREASURERS REPORT

DICK & BETTY FLOOD

STARTING BAL DEC.6TH. \$9762.59

INCOME (MEMBERSHIPS, CLOTHING
50/50) \$ 732.00

EXPENSES
GROOMER \$2145.20
TRAIL WORK \$ 374.83
WEBSITE \$ 124.00
JEROME FIRE DEPT \$ 200.00
NYSSA MEMBERSHIP FEES \$ 485.00
ENDING BAL. JAN.3RD. \$ 7165.56



WHAT'S GOING ON ???

FEB.17TH.(SAT.)

POKER RUN

OUR POKER RUN IS THE COMBINATION OF TOADHOLLOW SNOWMOBILE CLUB & MARCELLUS CLUB.

SEE ATTACHED COPY ON INFO. WE WOULD LIKE TO SEE A LOT OF MEMBERS PARTICIPATING IN THE RIDE,PLEASE SUPPORT YOUR CLUB.

FEB.25TH.(SAT.)

HOT DOG ROAST

STARTS AT 1:00PM

AT THE "EIPP ESTATE"

WE WILL BE ASKING YOU TO BRING A DISH TO PASS

DON'T FORGET !!!

TANNER VALLEY GOLF COURSE WILL BE OPEN FRI., SAT., & SUN. (SEE AD).

ALSO

FEB.3RD.

TANNER VALLEY IS ALSO IS HAVING A CROSSCOUNTRY SKIING EVENT

STARTING TIME IS 7:00PM

IT WILL END WITH A BONFIRE AT THE CLUB HOUSE.

WE'VE GOT 7" DIAMETER LASER CUT

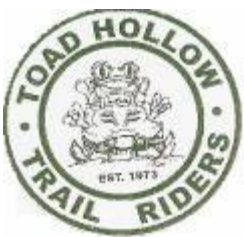
"TOADHOLLOW LOGO" DECALS FOR SALE.

THEY ARE MADE TO ORDER FOR \$10.00 EACH.

CALL TIM TAYLOR IF INTERESTED OR LET HIM

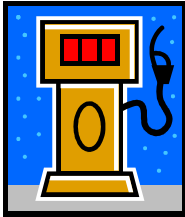
KNOW AT OUR NEXT MEETING.

WE ALSO HAVE ADDED TO OUR WEBSITE A TOADHOLLOW BLOG. YOU CAN ADD YOUR THOUGHTS, INFORMATION, A FUNNY ANTIDOTE OR SOMETHING THAT MAY BE OF INTEREST TO OUR FELLOW CLUB MEMBERS.



HEY TOADS & TOADETTES !!!!

BUY MARCELLUS RAFFLE TICKETS AT OUR NEXT MEETING. THE DRAWING WILL BE AT OUR POKER RUN FEB.17TH.



SAVE YOUR GAS RECEIPTS !!!!!!!

GIVE YOUR RECEIPTS TO DAN BILOW OR ANY DIRECTOR OR OFFICER.

The final NYSSA raffle drawing is on April 14th.



JIM BURT ,OWNER OF TANNER VALLEY GOLF CLUB WOULD LIKE TO THANK EVERYONE WHO HELPED AND PARTICIPATED IN THE WINTER FEST & ANTIQUE SLED SHOW . IT WAS A GREAT SUCCESS. A BIG THANKS TO JAY FENNER & JOHN KELSEY WHO RAN THE SLED SHOW – GREAT JOB

WE RECEIVED A NICE LETTER FROM NAVARINO FOOD PANTRY THANKING US FOR THE \$315.00 DONATION AND THE FOOD DONATION. THEY MENTIONED THAT THEY GET A LOT DURING THE HOLIDAYS, BUT NOT MUCH THROUGH THE YEAR,ALTHOUGH THEY REALLY NEED IT.

******* DUE TO THE AMOUNT OF SLED REGISTRATIONS IN N.Y. GOING DOWN BY 50% OUR TRAIL FUND FOR NEXT YEAR WILL ONLY BE \$2875.00 DOWN FROM \$6350.00**

FOR SALE CORNER

2000 YAMAHA V MAX 500 APPROX. 7500 MI. STUDED WITH COVER CALL TOM ANDREWS AT 468-1877 OR 468-6064

TOADHOLLOW CLOTHING

SWEATSHIRTS \$20.00
HOODIES \$35.00
LONG SLEEVED SHIRTS \$15.00
SHORT SLEEVED SHIRTS \$10.00
CAPS \$12.00
CAN COOLERS \$2.00



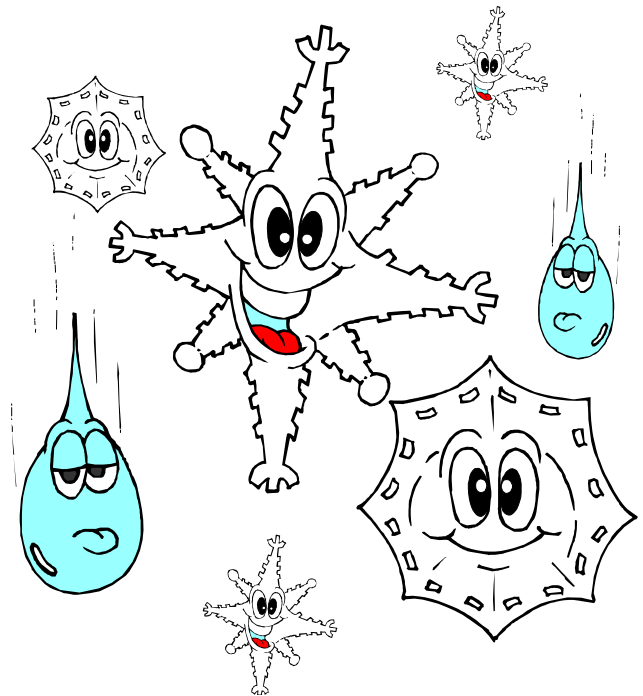
WE WOULD LIKE TO GIVE YOU AN UPDATE ON BRIAN GALE,WHO IS IN THE ICU AT UPSTATE HOSPITAL. I'M SURE MOST OF YOU ARE AWARE OF THE SNOWMOBILE ACCIDENT WHICH HAPPENED ON THURS., THE 25TH. UP ON TUG HILL. BRIAN WAS BROUGHT TO UPSTATE HOSPITAL BY HELICOPTOR IN CRITICAL CONDITION WITH NUMEROUS INJURIES. AS OF THIS DATE JAN.30TH., BRIAN HAS MUCH IMPROVED AND THEY HAVE WEENED HIM OFF THE DRUG INDUCED COMA THAT HE WAS PUT INTO. HOPEFULLY HE WILL START TO BREATH ON HIS OWN SOON. WE WILL KEEP YOU UPDATED ON OUR NEW TOADHOLLOW "BLOG". PLEASE KEEP BRIAN IN YOUR PRAYERS !

\$\$\$\$

THINK SNOW !!!!!

CONGRATS TO STEVE CHIORE FOR
WINNING THE 50/50 DRAWING.
THE TOTAL WAS \$306.00, STEVE
RECEIVED \$153.00.

CHECK IT OUT !!!!
WWW.TOADHOLLOW.NET



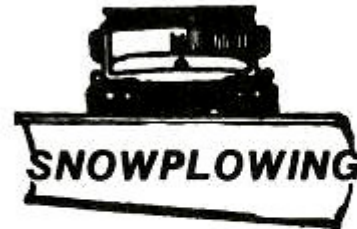
MARK ON YOUR CALENDAR OUR NEXT MEETING IS FEB.7TH.
AT ORCHARD VALI AT 7:30. HOPE TO SEE YOU THERE!!!

**AMBER INN
NEW
TAVERN HOURS**

**MON-THURS 11 AM-12AM
FRI-SAT 11AM-2AM
SUN NOON-12AM**

**TAVERN MENU
AVAILABLE**

**636-9982
SNOWMOBILES
WELCOME**



REASONABLE RATES

DOUGLAS PECK

(315) 447-7809

**CASE FARMS INC.
GO-KART LOUNGE
KEG'S CHERRY VALLEY TRACK**

Lunches - Legal Beverages - Racing

**4930 ROUTE 20. EAST
LAFAYETTE. NEW YORK 13084**

JR. CASE, Pres.
677-9771

KEG GRAVES, Vice Pres.
469-1906



DON'S AUTO BODY

Collision - Auto Painting

Don Dorfer

(315) 447-9614
Fax (315) 677-9437

2671 Case Hill Rd.
LaFayette, NY 13084

Shute's

WATER SYSTEMS
LAFAYETTE WATER CONDITIONING

**Pumps, Tanks, Filters,
Water Conditioning and Purification Systems**

NEIL SHUTE

Office 677-5552
Cell 952-1805

AUTO GLASS / AUTO AIR / SPEED CONTROL / ACCESSORIES



THRU-WAY AUTOGLASS DISTRIBUTORS, INC.

2814 ERIE BLVD. EAST, P.O. BOX 6045, SYRACUSE, NY 13217
(315) 446-4881 TOLL FREE (800) 962-0900

FORENSIC & FAILURE ANALYSIS INC.

13 Dwight Park Dr.
Syracuse, NY 13209

315-451-3400
Fax: 315-451-3401

forensicfailureanalysis.com



Howard (Bud) DeMatties
President,
Forensic Electrical Engineer

Pressure Washers, Shop Equipment, Lifts
Sales • Service • Rentals • Chemicals



MIKE BODY
SALES TECHNICIAN
mlb1951@yahoo.com



PBS BRAKE AND SUPPLY CORP.
6044 CORPORATE DRIVE
EAST SYRACUSE, NY 13057

(315) 463-4541
FAX (315) 463-1017
NYS 1-800-252-2271



19th GREEN MOTEL

P.O. Box 37, Route 28
Old Forge, NY 13420
Adirondack Mountains



Your Hosts
Pat & Nancy Venetz
Phone (315) 369-3575
www.19thgreenmotel.com

TANNER VALLEY

492-8113

LOCATED RIGHT ON THE TRAIL
PLENTY OF ROOM TO PARK YOUR TRAILER

OPEN
FRI. 4 PM TO CLOSE
SAT. & SUN. 11 AM TO CLOSE

FRIDAY NIGHT FISH DINNER

SATURDAY 4 – 6 PM
\$.25 WING SPECIAL

CROSS COUNTRY SKI TRAIL